



HOW TO BE A PART OF IPEIA

IPEIA.COM

VISION. MISSION.



To lead, grow and sustain an interconnected community to support the pressure equipment industry.

VISION



To enhance pressure equipment safety, reliability and innovation among industries, creating awareness, learning, and teamwork with all stakeholders.

MISSION

CORE VALUES

INTEGRITY

COMMUNITY

RELEVANCE

SUSTAINABLE

- The IPEIA Core Values explicitly state what we believe in
- Agreed-upon standard for evaluating our actions and behaviours with each other, industry, government, educators, and other stakeholders
- Help foster an open and positive work and collaboration environment and an ethical approach to decision-making and governance

IPEIA BOARD OF DIRECTORS



Laurent Charron
Board Chair

Laurent is a professional accountant and the Chief Financial Officer at WCB Alberta in Edmonton. He is also a certified Director with many years of governance experience with non-profit organizations.



Jamie Hiltz
Board Member

Jamie is a professional chemical engineer currently working at Nutrien. She has held various leadership roles on major projects, field operations and now in emerging technologies, including AI.



Robin Antoniuk
Board Member

Robin is Vice President Technical Services and Chief Operating Officer at ABSA in Edmonton and has had extensive involvement with IPEIA.



Vanessa Rawlins
Board Member

Vanessa is a professional mechanical engineer, recently retired, after 27 years in the Pressure Equipment industry. She has past experience with IPEIA.

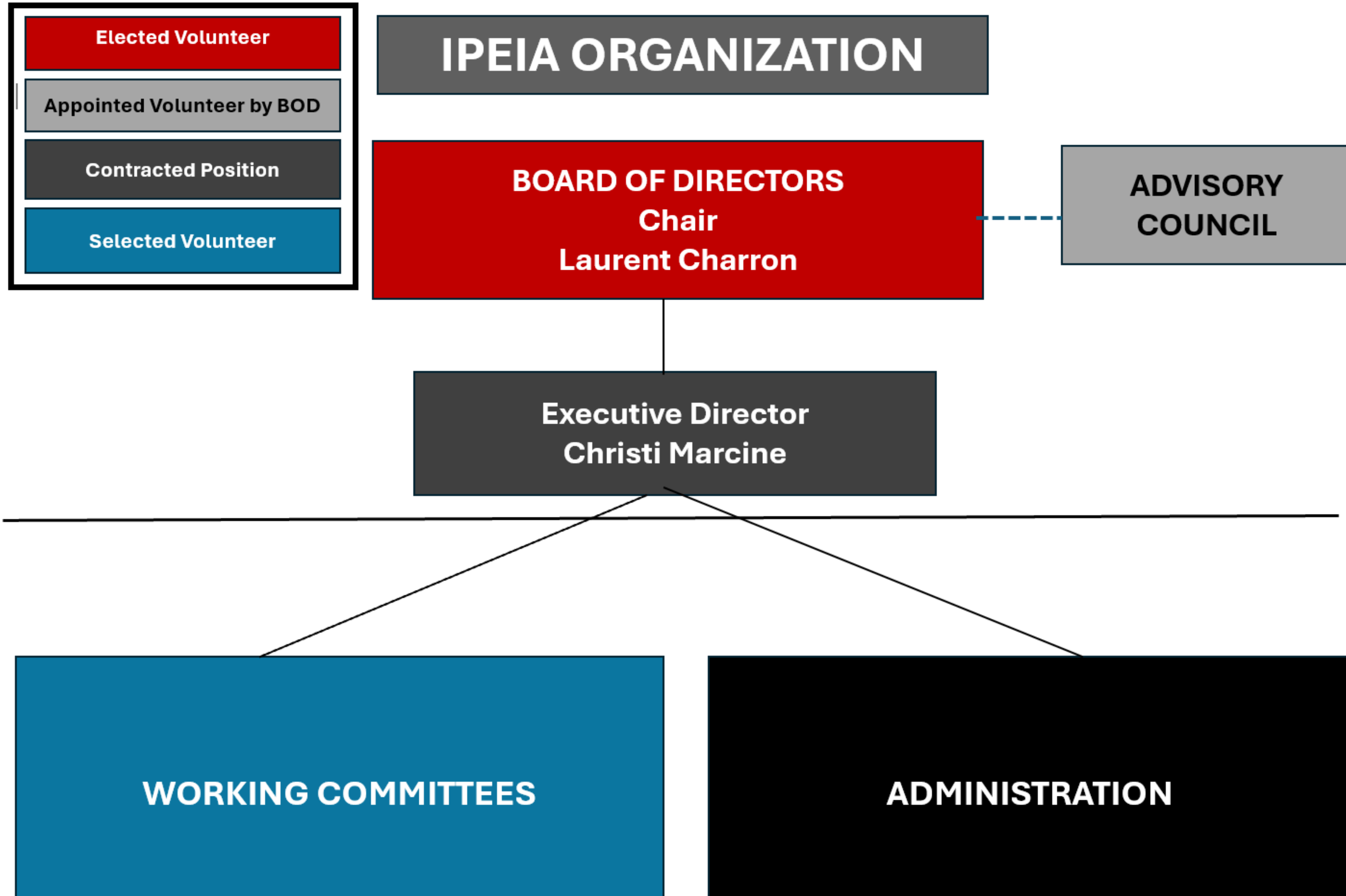


Monica Santander
Board Member

Monica is a professional environmental systems engineer with a career that has included roles at the National Energy Board, Husky Energy and senior leadership positions at Keyera Corp. in Calgary.



OPERATING MODEL ORGANIZATION STRUCTURE



IPEIA OPERATIONS LEADERSHIP



Christi Marcine
Executive Director

Christi is working with the Board on IPEIA's strategic planning while leading our daily operations, including the management of our volunteers and staff. She brings to IPEIA over 30 years of industry experience supporting not-for-profit associations with a strong background in project management, organizational change management, operational leadership and communications.



Faustina Gaffney
Program Chair

Faustina is the Marketing Manager for Unified Valve Group and has over 17 years of Marketing experience in Oil and Gas industry. Faustina is currently the Program Chair of IPIEA and has been a part of the Program Committee since 2017 and has held numerous roles within IPEIA.



Cody Scheu
Stakeholder Engagement Chair

Cody is an Integrity Manager for Canadian Natural Resources Limited. He is a strong advocate for safe, compliant, and reliable production through pressure equipment and pipelines. Cody is currently the Stakeholder Engagement Chair of IPIEA and has been a part of various IPEIA roles and committees since 2017.



OPERATING MODEL ORGANIZATION STRUCTURE

IPEIA OPERATIONS

**Executive Director
Christi Marcine**

WORKING COMMITTEES

**Stakeholder Engagement Chair
Cody Scheu**

**Sponsorship &
Exhibition Lead**

Sales/Support

**Regulators &
Industry Groups
Lead**

Regulators

ICF

Support

**General
Membership Lead**

Support

**Student
Membership Lead**

Support

**Program Chair
Faustina Gaffney**

Program Lead

Streams

Asset Integrity Management

NDE/ Repairs / Inspection

Failure Case Studies

Material Selection

Regulatory/ Codes / ICF

Webinar Series Lead

ADMINISTRATION

**Operations Coordinator
Haley Debnam**

**Operations Administrator
Mackenzie Van Doorn**

**Operations Program
Assistant**

**Operations
Stakeholder
Engagement Assistant**

Third Party Providers

**Creative House / Registration
id associates**

**Financial Services
Lockhart Accountants**

**IT & Tech Services
Tech Services Calgary**

**Conference Venues & Vendors
CTCC / Encore / Global / Marriott / Pictures UP/ Event Mobi**

**Additional Support
All other IPEIA 3rd Party Providers as required**

TEAM SUCCESS

Communication

Accountability

Open to Change

Supportive

Transparency

Unique Strengths

Commitment



Have FUN

Quality

Strategic Lens

Receptive

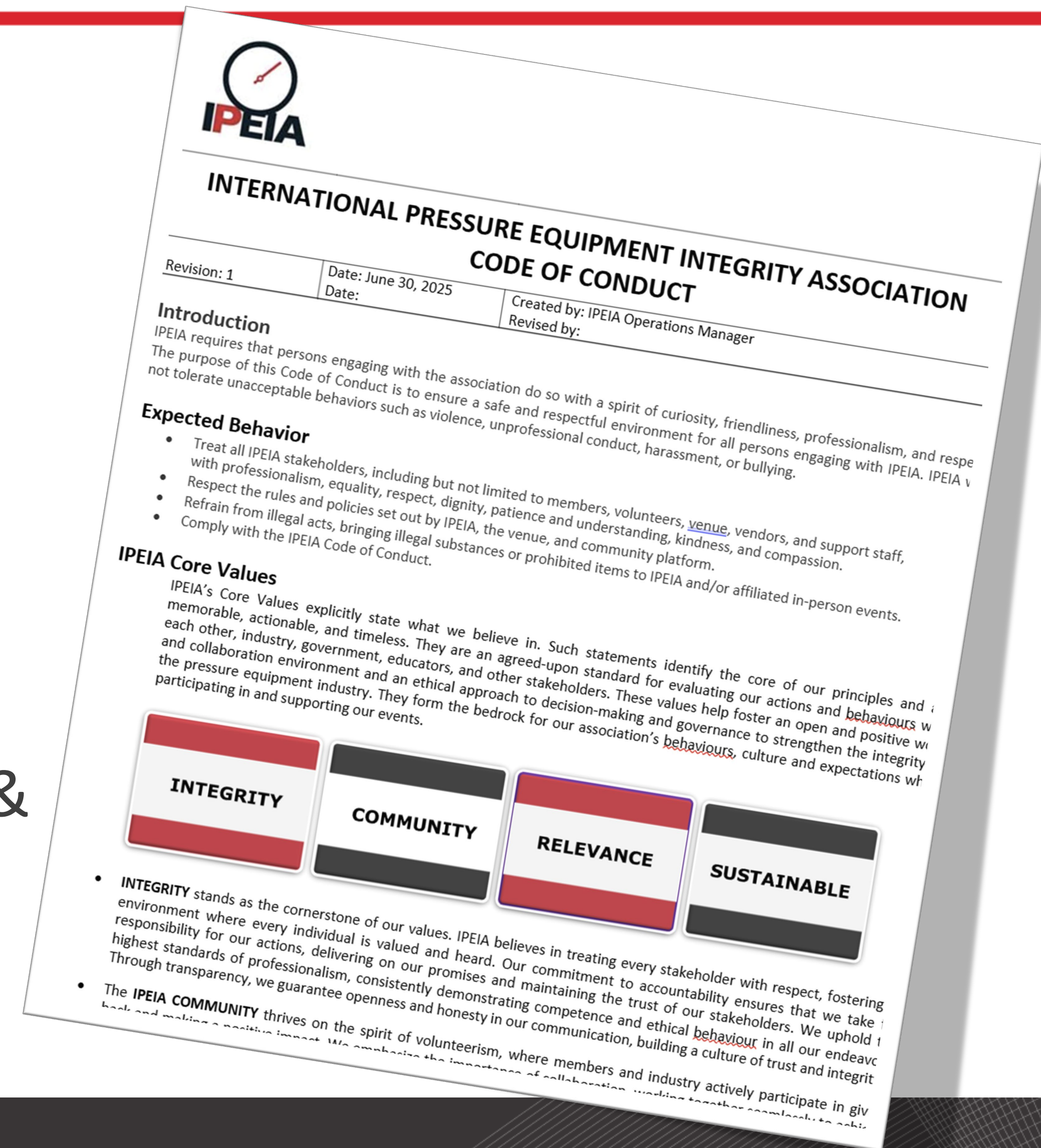
Grow & Learn

Collaboration

Fiscally Responsible

GUIDING BEHAVIOURS & TEAM CULTURE

- Be clear on expectations & time
- Be accountable and realistic
- Act in IPEIA's best interest
- Collaborate as one team
- Acknowledge contributions
- Face challenges with a solution mindset
- Be aware of personal areas of strengths & challenges and support one another
- Adhere to IPEIA's Code of Conduct



WORKING COMMITTEE ROLES



- The strategic direction of the Working Committees is set by the Board of Directors.
- They support IPEIA's mission by implementing key initiatives and fostering collaboration.
- They focus on delivering value to members, engaging stakeholders, and ensuring alignment with the association's strategic goals and industry needs.
- Working Committees are led by a Chair, who is a volunteer.
- Leads with specific areas of expertise report up through to the Chair and are responsible for the execution of the work for their focus area in conjunction with their sub-group volunteers.

WORKING COMMITTEE ROLES



- They assume the responsibility for a specific portion of the IPEIA Membership offerings by planning, marketing, and executing (e.g. technical program development).
- These Working Committees will report directly to the Executive Director
- Working Committee volunteers play a vital role in advancing IPEIA’s mission by contributing their time, expertise, and industry knowledge. They collaborate to develop and implement key initiatives, ensuring the delivery of valuable programs and effective stakeholder engagement.
- There are currently two IPEIA Working Committees – Programs and Stakeholder Engagement.

PROGRAM WORKING COMMITTEE

The **Programs Working Committee** is responsible for developing and delivering IPEIA's membership offerings under the strategic direction set by the Board. These offerings include Technical Sessions, Special Sessions (such as keynote presentations, panels, and workshops), educational programs, webinars, and other tools that enhance member value.



PROGRAM WORKING COMMITTEE

TECHNICAL PRESENTATIONS

PANEL DISCUSSIONS

STUDENT POSTERS

**KEYNOTES & SPECIAL
SESSIONS**





Major Tasks

- **Reviewing & judging** all submitted Abstracts for all Program platforms
- **Liaison** with Presenters
- To hold **various roles** at the conference
- To participate as a **Subject Matter Experts** for Webinars
- To be a **Webinar Lead** - provides support between Program Working Committee and Operations
- Drive the **Call for Content** and securing abstract submissions, using contacts, social media, colleagues, etc
- Attend all required **Meetings** for committee and sub-group
- IPEIA Conference & Exhibition **Support**

STAKEHOLDER WORKING COMMITTEE

The **Stakeholder Engagement Working Committee** drives IPEIA's industry connections and partnerships, guided by the Board's strategic direction. It leads sponsorship and exhibition activities while engaging industry groups and regulators to provide expertise, insights, and recommendations. The committee facilitates communication between IPEIA and these stakeholders to ensure alignment with industry needs.



STAKEHOLDER ENGAGEMENT WORKING COMMITTEE

**EXHIBITION &
SPONSORSHIP**

**REGULATORS &
INDUSTRY GROUPS**

GENERAL MEMBERSHIP

STUDENT MEMBERSHIP





Major Tasks

EXHIBITION & SPONSORSHIP

- Meet **sales** targets from sales/marketing plan
- Establish Sponsorship & Exhibitor **client/customer relationships**
- Provide ongoing Sponsorship & Exhibitor **client/customer care** throughout the annual cycle
- Review, research and provide **suggestions** for current and future sponsorship and exhibition offerings
- Attend all required **meetings**
- IPEIA Conference & Exhibition **Support**

REGULATORS & INDUSTRY GROUPS

- **Liaison** with Regulators & Industry Chairs and attend Industry meetings on behalf of IPEIA to gather industry feedback and support for the objectives of IPEIA
- **Recruit** Regulators & Industry Groups to support IPEIA
- **On-site liaison** for Regulators Industry Groups during the conference
- **Build & support** Integrity Challenges Forum (ICF), Special Sessions and Panel Discussions
- Attend all required **meetings**
- IPEIA Conference & Exhibition **Support**



Major Tasks

GENERAL MEMBERSHIP

- **Research** and **propose** membership offerings for consideration
- **Build** and **execute** new membership offerings
- **Recruit** new members
- **On-site liaison** for all membership events as required attend all required meetings
- **Attend** all required meetings
- IPEIA Conference & Exhibition **Support**

STUDENT MEMBERSHIP

- **Research** and **propose** student membership offerings for consideration
- **Build** and **execute** new student offerings
- **Lead** and **support** New Generation Intersociety events, student poster presentations and all other student related offerings
- **Recruit** new members
- **On-site liaison** for all student membership events as required
- **Attend** all required meetings

COMMITMENT

YOUR PROMISE TO IPEIA

**Working Committee
Chairs & Leads
2 YEARS MINIMUM**



**Working Committee
Team Members
1-2 YEARS MINIMUM**

- ✓ **Deliver on YOUR Commitment**
- ✓ **Respect IPEIA's Guiding Behaviours**
- ✓ **Follow IPEIA's Policies and Procedures**

BE AN IPEIA VOLUNTEER

Apply Online!!

<https://www.ipeia.com/ipeia-volunteers/>



You will be contacted for an interview.

For additional information refer to
www.ipeia.com

IPEIA Strategy
IPEIA Mission / Vision
About IPEIA
IPEIA Governance
IPEIA Operations
IPEIA Policies
FAQ

